

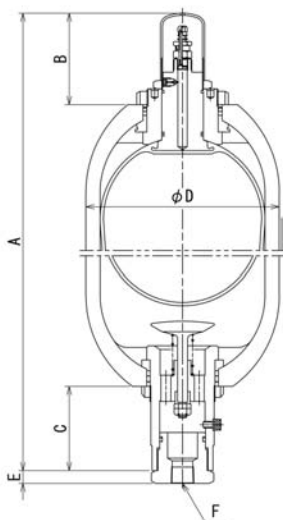
Recently, accumulator came to be used for not only oil system but also water/special liquid system being operated by high purity washing water, high cleanliness chemical fluid, etc.

For such applications, a stainless steel accumulator is most appropriate.

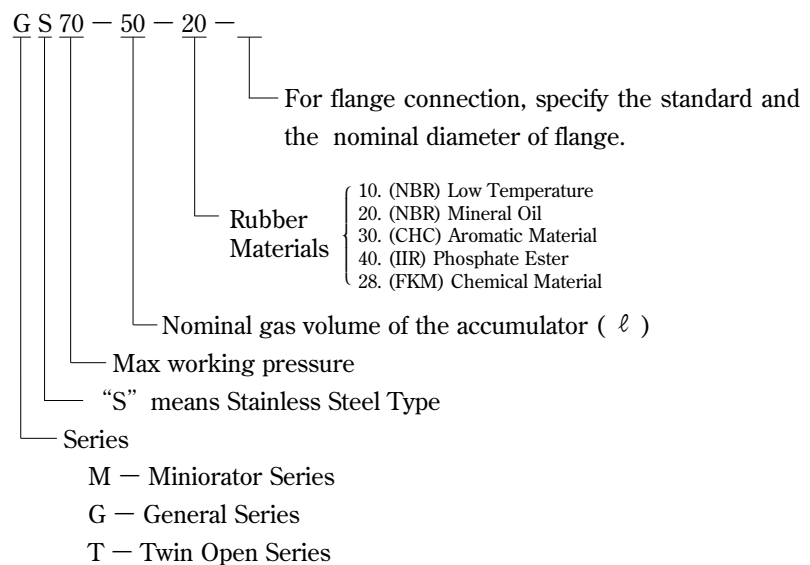
## ■ Features :

- The material is stainless steel that has high anti-corrosiveness such as SUS304, SUS316L, etc.
- Customer can maintain a high cleanliness level in the lubricating system, the hydraulic system, etc. by using this accumulator.
- The shell is designed under JISB8358 and is non-weld integral structure made from seamless tube.
- Titanium (TB480H) bladder type accumulators are also available.
- The special model with the max working pressure up to 34.4MPaG can be supplied.

Stainless Steel Type in G Series



## ■ Model symbols :



Model	Dimensions	Max W.P. (MPa)	Gas volume (ℓ)	Mass (kg)	A (mm)	B (mm)	C (mm)	D (mm)	E (mm)	F
MS210-0.1 -0.3 -0.5 -1	20.6	0.115	2	232	85	※ UD Ref. page 7	74	60.5	—	Rc1/4
		0.29	5	286			94	76.3	35	
		0.5	6.3	376			115	100	10	
		1.0	10.5	398						
GS140-1 -2.5 -4 -5	13.8	1.0	9	391	107	64	114.3	15	Standard unit comes with a bushing Rc3/4 connection. As to a flange connection, refer to page 16.	
		2.4	12.5	577						
		3.4	21	500						
		4.4	24	558						
GS70-10 -20 -30 -50 -60	7.0	12.0	35	656	89	106	232	15		
		21.3	48	929						
		38.7	76	1440						
		56.1	101	1948						
		67.6	120	2314						
TS70-10 -20 -30 -50 -60	7.0	11.5	37	665	104	101	232	15		
		20.8	50	938						
		38.2	77	1449						
		55.6	103	1957						
		67.1	123	2323						
TSL60-100 -170 -240	6.0	101.0	162	1323	107	105	406.4	A flange connection is OPF-S (Ref. page 16).		
		167.0	240	1938						
		237.0	320	2578						

◎The dimensions of E and F written in the above table is our standard size. If other standard such as ASME, API, JPI or DIN or other special material is required, please let us know the specification.

◎Please let us know your desired allowable flow rate.